

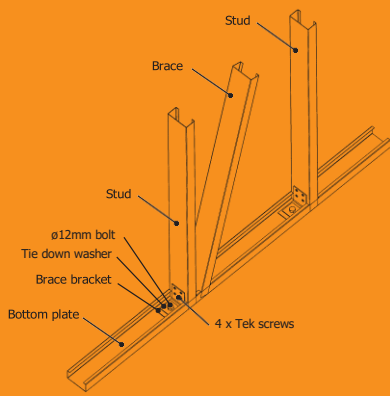
STEEL

FRAME

& TRUSS SYSTEM



FRAMETEK
STEEL FRAMING SPECIALISTS



The FRAMETEK systems have many design features that enable fast accurate builds. These standard features are unique to the FRAMETEK system and contribute to the superior final result of the building. Save time and money, specify FRAMETEK.



STEEL FRAME & TRUSS SYSTEM

Fast becoming the builders' choice of material, steel framing delivers benefits that are often not seen, but add to the supreme finish expected in quality homes today.

Environmental sustainability

FRAMETEK Steel Frames and Trusses are proudly manufactured in New Zealand from steel that is locally sourced from west coast iron sands and contains a component of recycled steel. FRAMETEK Steel Framing and Trusses require no preservative chemicals and negates increased site waste due to the pre-manufactured process off site, reducing the environmental impact of building. The major contributing factor to FRAMETEK systems sustainability is that steel is 100% recyclable.

You dream it, we make it...

Steel framing has now gained the trust of specifiers, draftspersons and architects to provide excellent strength and superb spanning possibilities allowing greater design freedom in a cost effective package.

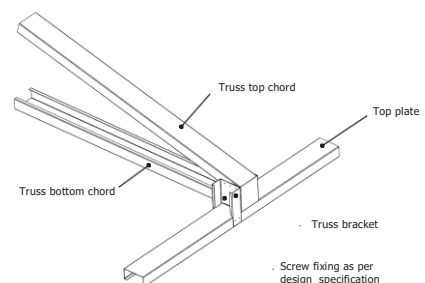
Most cost effective

Your home is only as good as the foundations and framework, if its not square and true the rest of the build will be compromised. FRAMETEK Steel Framing comes straight, clean, strong and stable and can be installed in any weather, reducing the construction programme. In comparison with timber, steel makes good economical sense. Ask your building professional to investigate the FRAMETEK Steel alternative today.

50 Year Durability Statement

FRAMETEK Steel Framing and Truss uses AXXIS® Steel which is backed by NZ Steel. It has a galvanized 100% zinc coating, complete with a 50 Year Durability Statement giving you peace of mind, with a quality product that will last the test of time.

FRAMETEK Steel Frame & Trusses - The future of building.



Label printing for controlled assembly



Pre-punched service holes fitted with purpose made grommets for additional safety



Pre-punched service holes



Superior finishing

FRAMETEK has been the leader by using globally proven rollforming technology for over 10 years. In this time we have set the benchmark for quality, accuracy and overall finish. Straight frames that sub trades trust is one of the many benefits when working with FRAMETEK Steel systems. You can also rely on steel for dimensional stability as it does not expand or contract with moisture or temperature changes. FRAMETEK Frames and Truss will not twist, warp, sag or shrink.

Reduced construction programmes

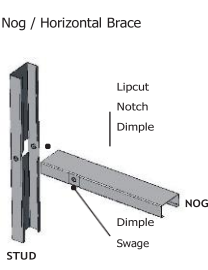
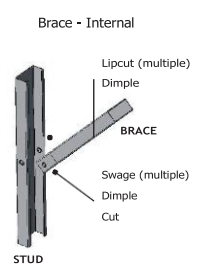
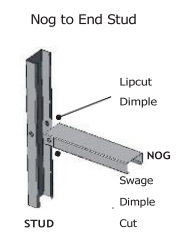
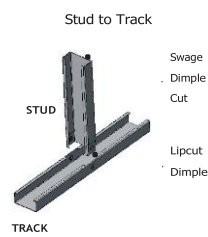
Professionals in the trade report that working with FRAMETEK Steel systems is very fast and straightforward. The frames arrive on site as either knock down or pre-assembled. They are accurate and easily identifiable which increases the speed of standing frames. Our framing is screw fixed so no welding is required. The FRAMETEK system provides further opportunity to reduce labour costs, with pre-punched plumbing and electrical service holes so sub trades are installing services their first day on site.

Top quality finish

Homeowners and trade professional opinions are what really count when assessing the benefits of FRAMETEK Steel Framing. As well as a top quality finish you'll enjoy a healthier indoor environment, safe in the knowledge that your frames do not absorb moisture, won't support mould growth and will not rot. The problems with frame movement are greatly reduced, meaning your home will look as great as the day you moved in.

Healthy, safe and appealing

Steel framing has none of the additional chemicals associated with timber, so builders and sub trades will not be exposed to these harmful substances. Steel framing is environmentally friendly and is 100% recyclable. Wastage in steel plants is typically less than 1% and it can be reused or recycled when the building is demolished. FRAMETEK use AXXIS® Steel which has been awarded the Sensitive Choice blue butterfly by The Asthma Foundation - why would you settle for anything less? When using FRAMETEK Steel Framing you can be sure of providing your family a healthy home environment.



With many years of experience as New Zealand's leading Steel Frame supplier, FRAMETEK has answered hundreds of enquiries relating to steel frame buildings. Some of the most commonly asked questions when working with steel are;

Is steel slower or faster to build with?

Working with steel can provide time savings on the total build project. Frames and trusses are usually supplied pre-assembled and ready to stand on site. Steel frames are light and easy to move (approx 1/3 weight of timber) and erecting steel is not so weather dependent. Builders also report less maintenance problems with steel frames, resulting in less remedial work from call backs.

How do I create electrical and plumbing service holes?

FRAMETEK Steel Framing is trade friendly and service holes are pre-punched with plastic grommets to protect services.

Additional service holes are easily drilled or can be made cleanly with a stub punch.

Interior linings, how to fix?

Wall linings are glued and screw-fixed in place. Fixings are available from your local building merchant. Ask FRAMETEK or your supplier for details.

Steel framing and electricity, is it safe?

Yes, standard trade practice is to earth steel frames, so if they do become exposed to live-wires the earthing creates a short which trips the residual current safety switch and reduces the chance of electrocution. Tests also show steel framing offers better protection in a lightning storm, if struck, the charge will be redirected straight to the ground via the earth wire, reducing the likelihood of fire or injury.

Do I need a new set of tools?

No, the FRAMETEK Steel Framing system requires few specialist tools. You will need a pair of quality tin snips, an impact driver with bits including 150mm bits for screwing into deep corners and a hole saw (34mm) to make any additional service holes. No welding equipment is required.

Is steel framing a good choice of material when looking to build a healthy home?

A steel framed home is a healthy home. AXXIS® steel is the framing material to be awarded the Sensitive Choice blue butterfly by The Asthma Foundation. Steel framing does not leach toxic chemicals, it will not act as a food source for mould and in the unfortunate event of moisture ingress, will not rot or promote mould growth.

We want steel framing but what about the floors?

Is steel an option?

The FRAMETEK Steel Floor Joist system is the logical choice. There are no issues with moisture, squeaking, growing or shrinking as with timber floors. Our steel joist systems are strong, spanning up to 6.9 metres and are both fire and noise rated to Winstone Wallboard specifications.

More detailed information can be found at www.nzsteel framing.co.nz



P: +64 6 7589880 or 0800 50 STEEL (78 335)
E: admin@frametek.co.nz
W: www.frametek.co.nz