

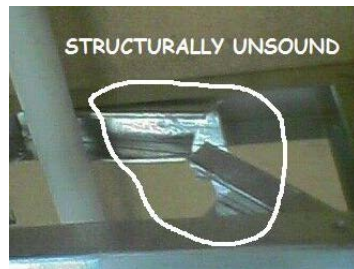
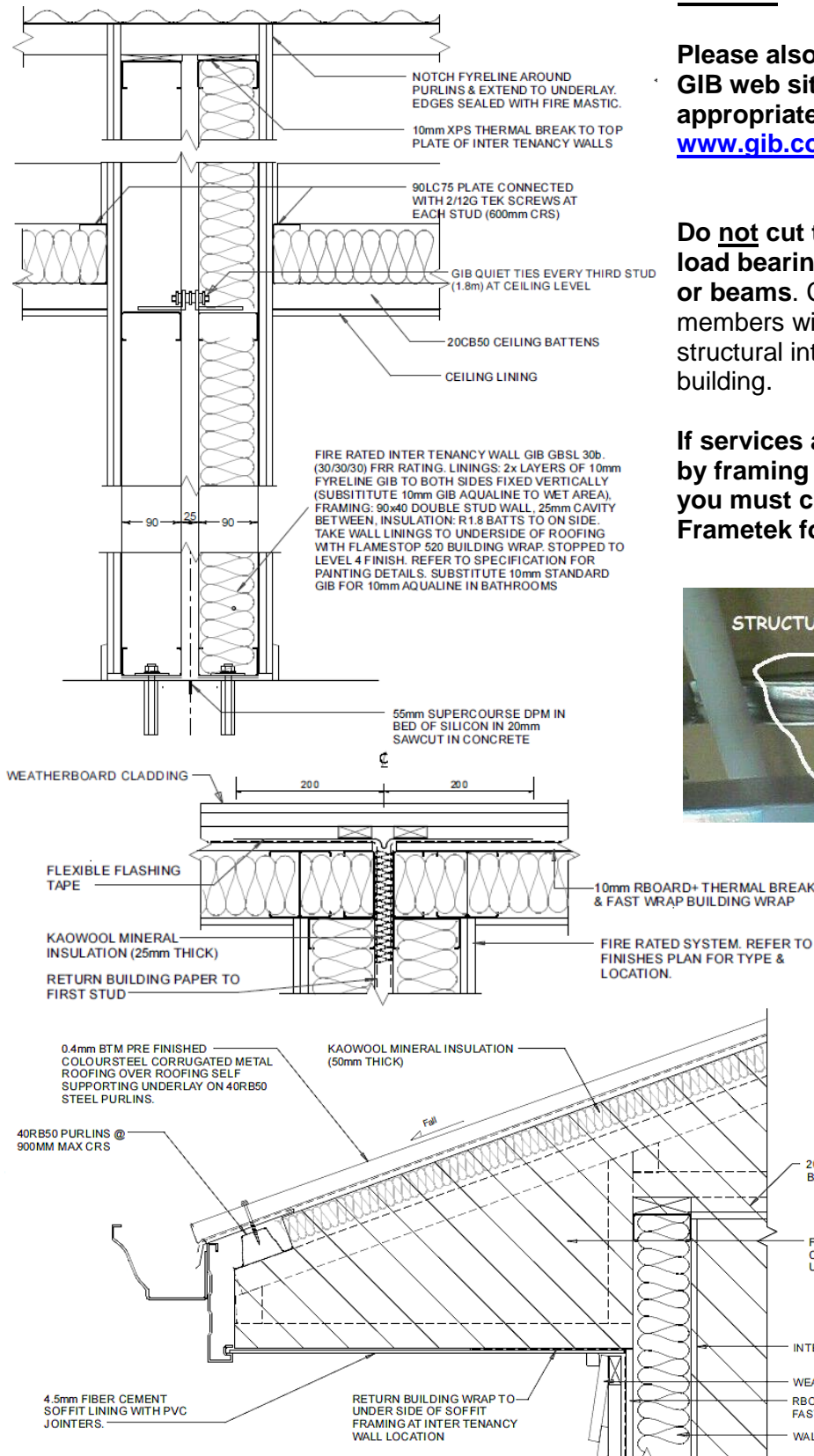
0800 50 STEEL (0800 50 78335)
www.frametek.co.nz

Plan... before starting

Please also refer to the **GIB web site for the appropriate manuals – www.gib.co.nz**

Do not cut the framing in load bearing walls, lintels or beams. Cutting structural members will affect the structural integrity of the building.

If services are obstructed by framing for any reason you must contact Frametek for advice.



General Check List

- Safety first -
 - Earmuffs
 - Glasses
 - Non-slip gloves
 - Tweezers
- Aviation Tin Snips -
 - Left hand
 - Right hand
 - Straight
 - 90° offset
- Battery Drill, Impact Driver (charger)
- Cardboard for Templates
- Clamps –
 - adjustable “C”
 - adjustable Flat vice
- Driver Bits –
 - 8mm Hex (short)
 - 8mm Hex (long)
 - Phillips
 - Extension
- Frametek Construction Manual – Please download from www.frametek.co.nz**
- Glue adhesive
- Hole saw #34mm
- Hole punch
- Magnetic –
 - Level
 - Stud finder
- Permanent Markers
- Set Square
- Silicon –
 - pipes to grommets
- Tape measure
- Utility Knife (snap blade)
- Vacuum for Swarf