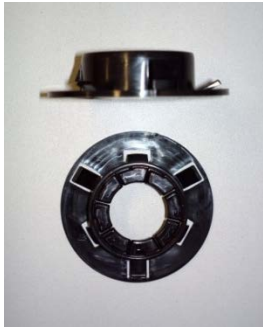


0800 50 STEEL (0800 50 78335)
www.frametek.co.nz

Steel framing is conductive and must be earthed as soon as it is stood (Temporary earth stake). Metal flush boxes can be used.



Plan your cable routes before starting. Truss channels should not be used as cable runs since the ceiling battens are screwed through into them.

Service holes have been provided at convenient work heights in the studs. Use the pre-punched holes wherever possible. A box of grommets is provided on site for fitting into these holes. Be careful not to drag cables over screws or sharp edges.

The hole size for the grommets is 34mm.
For extra holes use a 35mm hole saw or manual hole punch.

If you need more grommets please contact Frametek.

Running cables

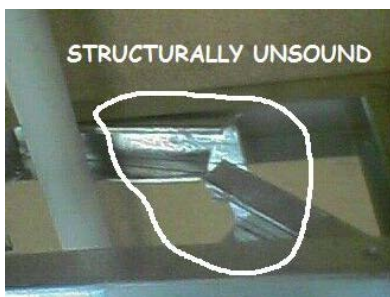


Use pre-punched holes or manually drill holes as required

Hex-Tek & Flat Head



Install flush boxes or plate using Hex-Tek or Flat Head screws.



Do not cut the framing in load bearing walls, lintels or beams. Cutting structural members will affect the structural integrity of the building.

If services are obstructed by framing for any reason you must contact Frametek for advice.

**General
Check List**

- Safety first -
 - Earmuffs
 - Glasses
 - Non-slip gloves
 - Tweezers
- Aviation Tin Snips -
 - Left hand
 - Right hand
 - Straight
 - 90° offset
- Battery Drill, Impact Driver (charger)
- Cardboard for Templates
- Clamps -
 - adjustable "C"
 - adjustable Flat vice
- Driver Bits -
 - 8mm Hex (short)
 - 8mm Hex (long)
 - Phillips
 - Extension
- [Frametek Construction Manual - Please download from www.frametek.co.nz](http://www.frametek.co.nz)
- Glue adhesive
- Hole saw 34mm
- Hole punch
- Magnetic -
 - Level
 - Stud finder
- Permanent Markers
- Set Square
- Silicon -
 - pipes to grommets
- Tape measure
- Utility Knife (snap blade)
- Vacuum for Swarf