

0800 50 STEEL (0800 50 78335)
www.frametek.co.nz

Plan your pipe routes before starting

Truss channels should not be used as pipe runs since the ceiling battens are screwed through into them.

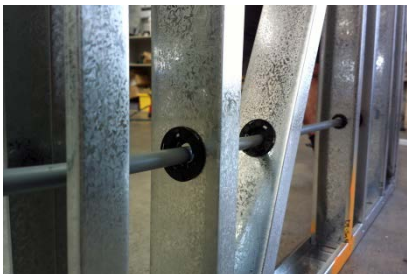
Service holes have been provided at common run heights. Use these pre-punched holes wherever possible. A box of grommets is provided on site for fitting into these holes. DO NOT drag pipes over screws or sharp edges.

Note: Ensure separation of brass/copper fittings from framing with DPC or equivalent non-absorbent material. (Galvanic reaction)

Grommet service holes are 34mm. Use a 34mm ~ 35mm hole saw or hole punch for holes other than provided. For extra grommets contact Frametek.



Use the pre-punched holes or manually drill holes as required.



Pre-punched service holes



Manually drilled hole



Protect piping beside noggs

Installing noggs for wingbacks.

Isolate brass/copper from framing with DPC or equivalent.

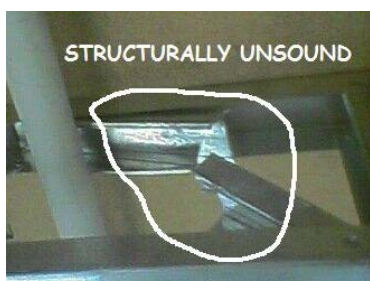
Flat noggs can be installed for wingbacks using Hex-Tek screws.



Hex-Tek & Flat Head



Flat nogg - setback into studs



Do not cut the framing in load bearing walls, lintels or beams. Cutting structural members will affect the structural integrity of the building.

If services are obstructed by framing for any reason you must contact Frametek for advice.

General Check List

- Safety first -
 - Earmuffs
 - Glasses
 - Non-slip gloves
 - Tweezers
- Aviation Tin Snips -
 - Left hand
 - Right hand
 - Straight
 - 90° offset
- Battery Drill, Impact Driver (charger)
- Cardboard for Templates
- Clamps –
 - adjustable “C”
 - adjustable Flat vice
- DPC
- Driver Bits –
 - 8mm Hex (short)
 - 8mm Hex (long)
 - Phillips
 - Extension
- Frametek Construction Manual –**
Please download from www.frametek.co.nz
- Glue adhesive
- Hole saw #34mm
- Hole punch
- Magnetic –
 - Level
 - Stud finder
- Permanent Markers
- Set Square
- Silicon –
 - pipes to grommets
- Tape measure
- Utility Knife (snap blade)
- Vacuum for Swarf